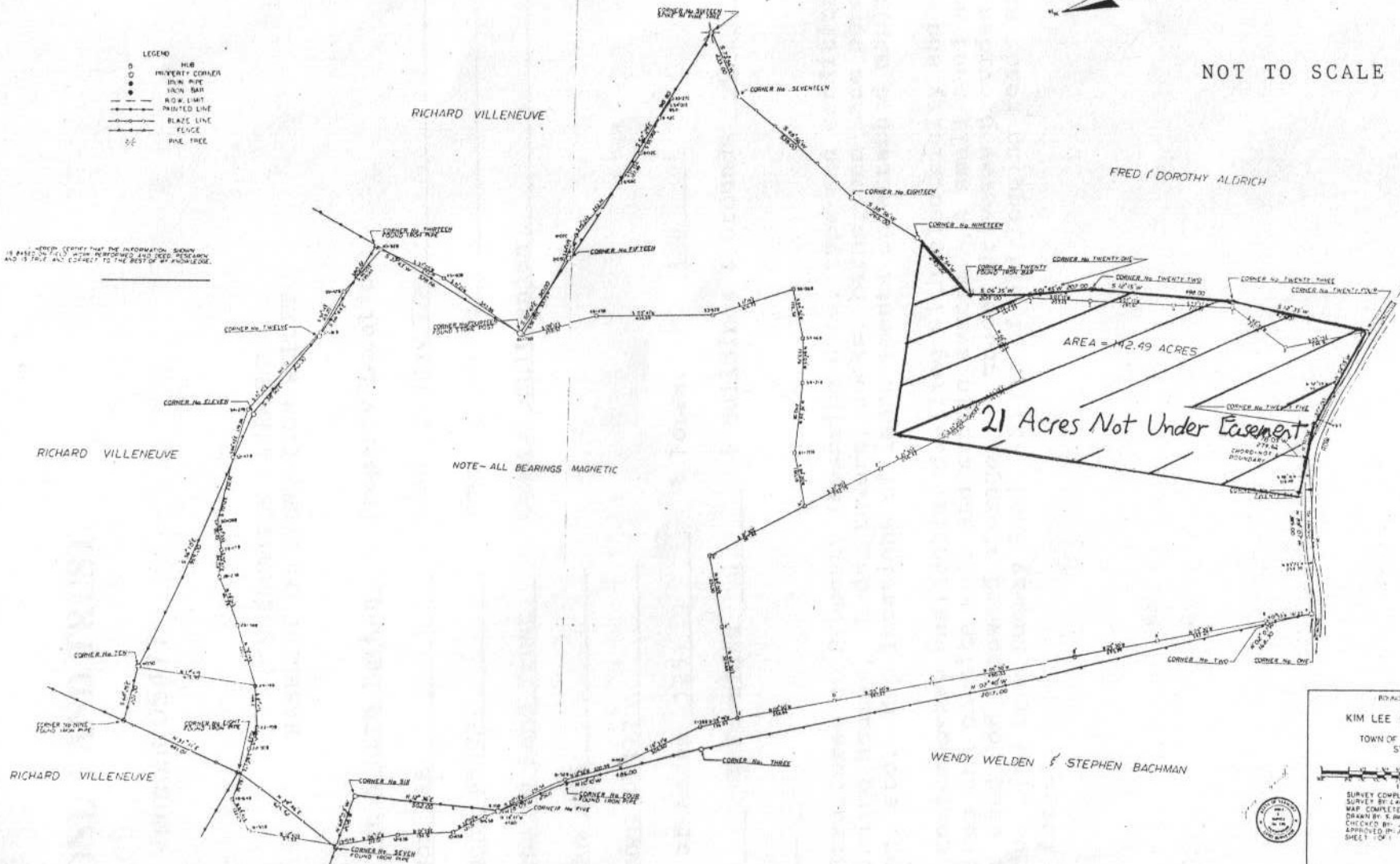


- LEGEND
- HUB
  - PROPERTY CORNER
  - DRIVE PILE
  - FOUND PILE
  - R.O.W. LIMIT
  - PAINTED LINE
  - BLAKE LINE
  - FENCE
  - PINE TREE

— HEREIN CERTIFY THAT THE INFORMATION CONTAINED  
HEREIN IS TRUE AND CORRECT TO THE BEST OF MY KNOWLEDGE.

NOT TO SCALE



NOTE - ALL BEARINGS MAGNETIC

BOROUGH SURVEY MAP  
TOWN  
KIM LEE & DAVE GOLDSMITH  
LOCATED IN  
TOWN OF RICHMOND  
STATE OF VERMONT  
SCALE  
1 INCH = 100 FEET  
SURVEY COMPLETED PER PERM  
SURVEY BY LAND RECORDS DEPARTMENT  
MAP COMPLETED MARCH 1991  
DRAWN BY E. BAILEY  
CHECKED BY J. HARRIS  
APPROVED BY J. HARRIS  
SHEET 001

RICHMOND LAND RECORDS OFFICE

December 23, 1991 record 1991

This survey is recorded in the Richmond Land Records in Map Volume 3 Page 48

At 8 o'clock 30 minutes A M  
and recorded in Book 76 Page 393-402  
of Land Records.

Attest:  
Paulita J. Cook  
Town Clerk