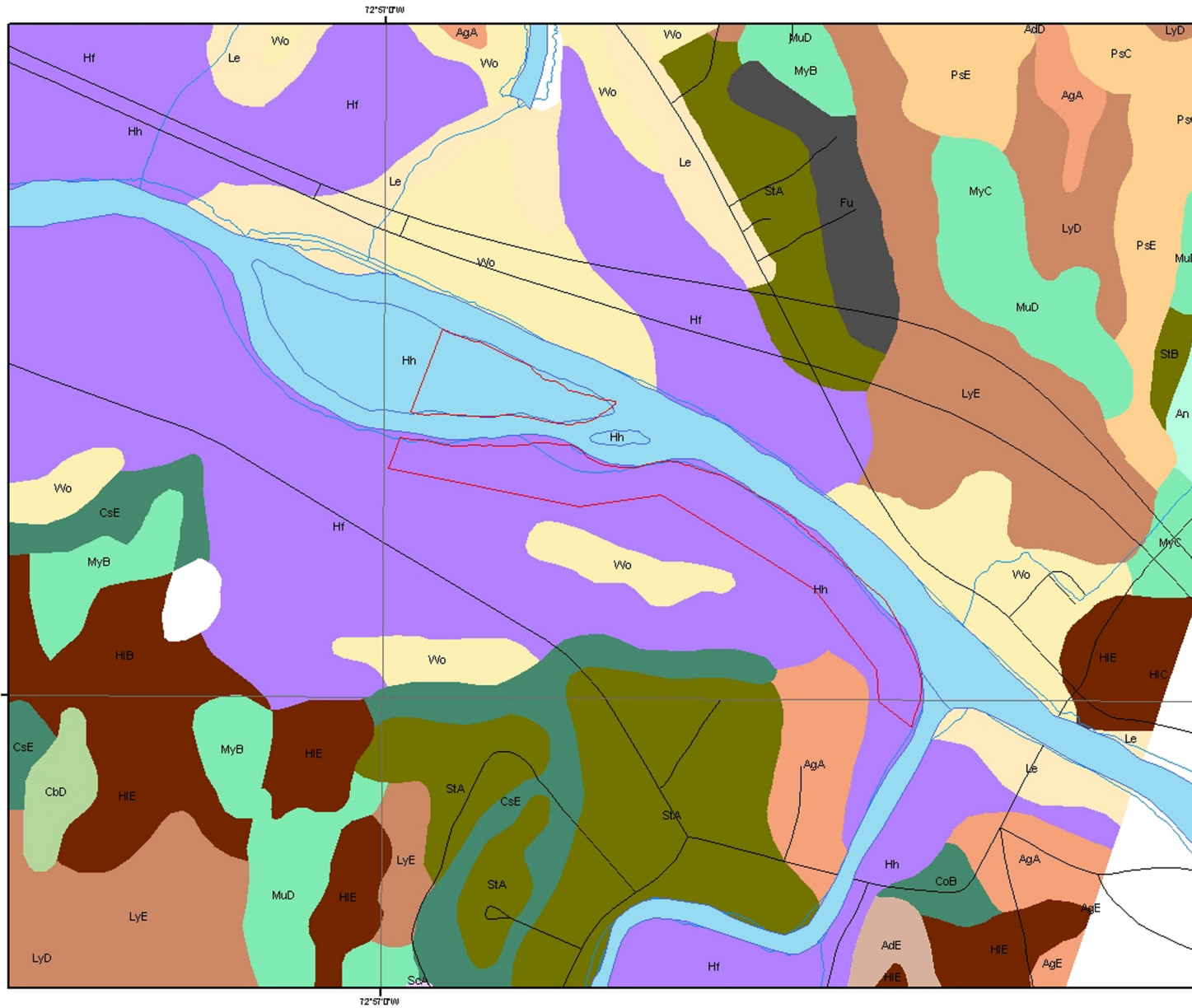


# Safford Brown Parcel Soils

Richmond Land Trust Conservation Areas



**Legend**

- Roads
- Streams
- Roads and Streams
- ▭ Safford Brown Parcel

**Soil Type**

- ADAMS AND WINBORO LOAMY SANDS (Ad\_A, Ad\_B, Ad\_D, Ad\_E)
- ADAMS FINE SANDY LOAM (Ag\_A, Ag\_D, Ag\_E)
- ALLUVIAL LAND (Aq)
- ALL ORES FINE SANDY LOAM (Ao)
- BELORE AND BELORIE SOILS (Bla, Bli, BliC, BliD)
- BLOOMINGTON LAND (Bo)
- BOKROPPITS (Bk)
- CAROLTON SILT LOAM (Ca\_A, Ca\_C, Ca\_D, Ca\_E)
- COLTON AND STETSON SOILS (Co\_D, Co\_E)
- DUNBAR AND DEERFIELD SOILS (Dsa, Dsb, Dsc)
- EMERY AND WARELY SOILS (Ew\_A, Ew\_B)
- FILL LAND (Fu)
- HADLEY VERY FINE SANDY LOAM (Hx, Hx)
- HARTLAND VERY FINE SANDY LOAM (Hla, Hli, HliC, HliD, HliE)
- HINSDALE FINE SANDY LOAM (Hra, Hrb, HrbC, HrbD)
- LINCOLN SILT LOAM (Ll, Ll)
- LIVINGSTON CLAY (Lv)
- DYMAN AND LOW ROCKY LOAMS (Lm\_A, Lm\_C, Lm\_D, Lm\_E)
- MARLOW STONY LOAM (Mla, Mlb, Mlc, Mle)
- MUCK AND PEAT (Mg)
- MUNSON AND BELORIE SILT LOAMS (Mu\_D, Mu\_E)
- PEACOCK STONY SILT LOAM (Po)
- PERU STONY LOAM (Pe\_A, Pe\_C, Pe\_D, Pe\_E, Pe\_F)
- ROCK LAND (Rl)
- SCANTIC SILT LOAM (Sca, Scl)
- SOARBO LOAM (So)
- STETSON ORAVELLY FINE SANDY LOAM (Sla, Sli, SliC)
- STOCKBROOK AND KELLS STONY LOAMS (St\_A, St\_B)
- TERRACE DEPOSITS, SILTY AND CLAYEY (Tsb, Tmc, Tnc)
- WINDSOR VERY FINE SANDY LOAM (Wv)

Data Sources: All map layers are from Vermont Center for Geographic Information  
 North American Datum 1983  
 Universal Transverse Mercator Projection

Map created by Jens Hilke 7/04 for the Richmond Land Trust  
 Scale 1:6,000

0 0.025 0.05 0.1 0.15 0.2 Miles  
 0 0.03 0.06 0.12 0.18 0.24 Kilometers

