

Description of Photograph Points
Wheeler South Property
April - June
Walter Poleman, Photographer

<u>Photo</u>	<u>Direction</u>	<u>Description</u>
1.	W	Looking West from SE corner of property
2.	N	Looking North from SE corner of property
3.	S	Looking South from NE corner of cornfield
4.	W	Looking West from NE corner of cornfield
5.	S	Looking South from boundary with West Barn Site
6.	N	Looking North from Route 2
7.	NE	Looking Northeast from Route 2 on SW corner of property
8.	SW	Aerial Photo of Hemlock/Birch Swamp on northern section of parcel
9.	N	Looking North at Vernal Pool
10.	N	Looking North at Red Pine Plantation
11.	N	Aerial Photo of Property
12.	NW	Looking Northwest at Northern Hardwood Talus Woodland



#1



#5



#2



#6



#3



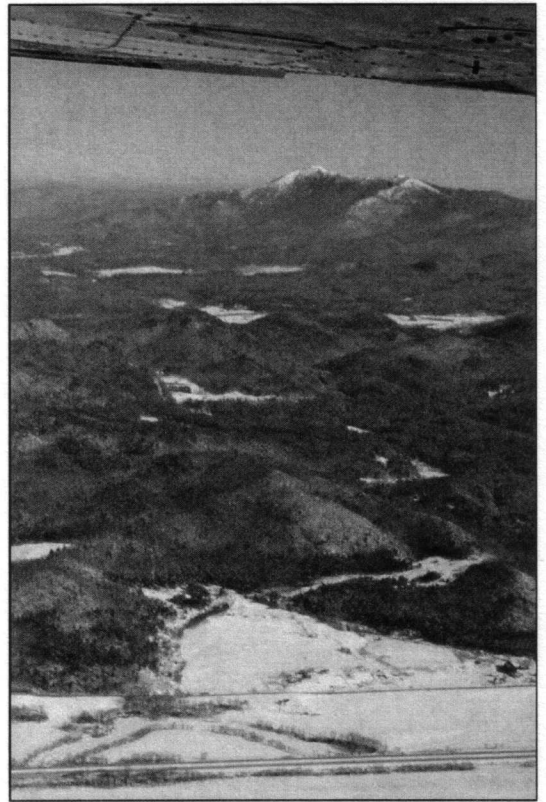
#7



#4



#8



#11



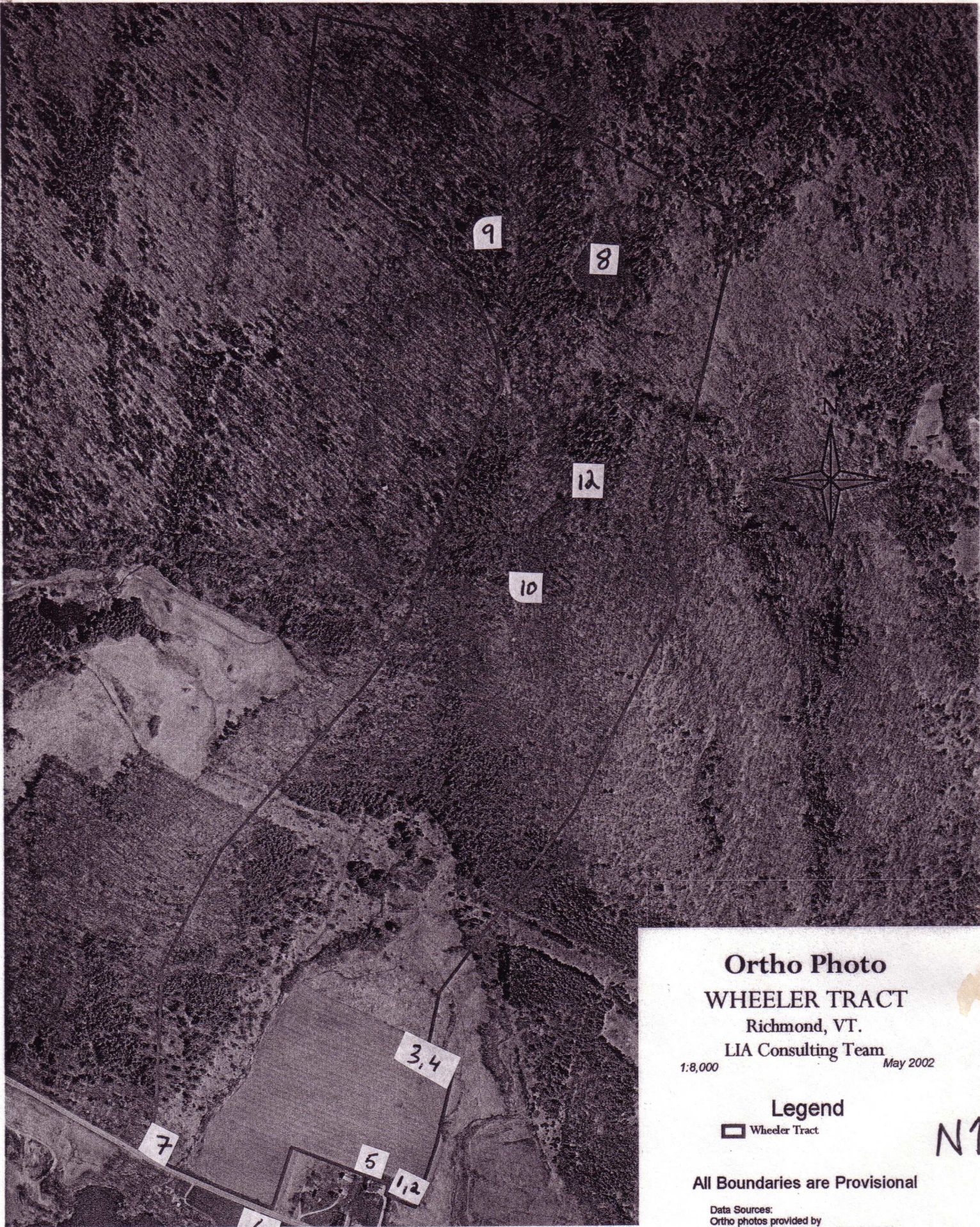
#9



#10



#12



200 0 200 400 Meters

Ortho Photo WHEELER TRACT


Richmond, VT.

LIA Consulting Team

1:8,000

May 2002

Legend

 Wheeler Tract

N ↑

All Boundaries are Provisional

Data Sources:
Ortho photos provided by
Vermont Center for Geographic Information.

Map Created by LIA Consulting Team

11

Photograph Point Map