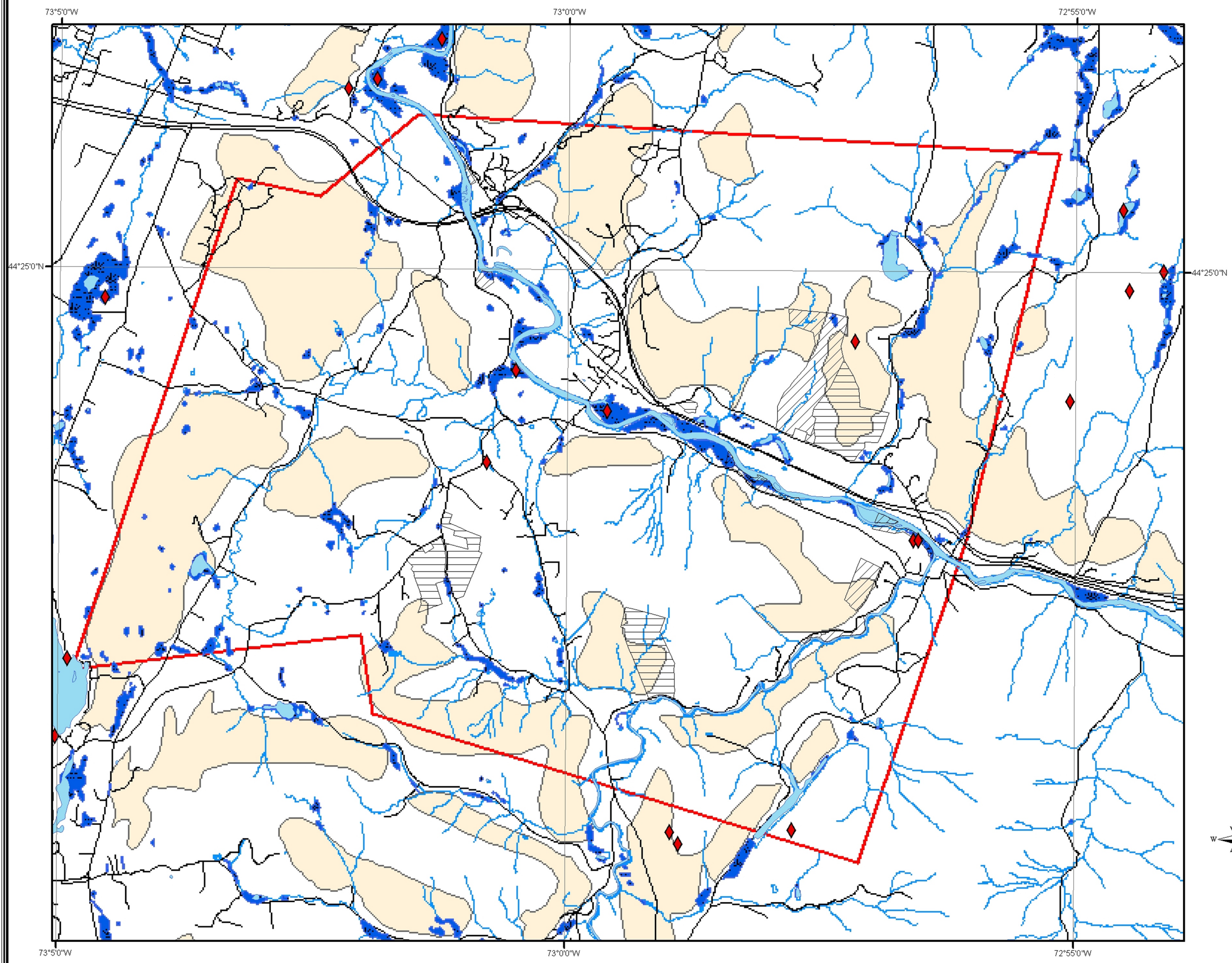


Richmond Sensitive Areas

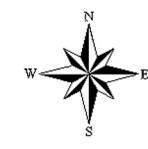
Richmond Land Trust Conservation Areas

Legend

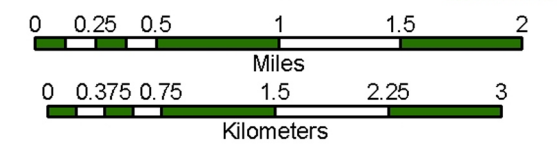
- Land Owned by RLT
- Conserved Land (RLT)
- Richmond Boundary
- Roads
- Wetlands
- Rivers and Streams
- Deer Wintering Areas 1998
- Endangered Plants and Animal Hotspots



Data Sources: All map layers are from Vermont Center for Geographic Information
North American Datum 1983
Universal Transverse Mercator Projection



Map created by Jens Hilke 7/04
for the Richmond Land Trust
Scale 1:50,000



73°50'W 73°00'W 72°55'W