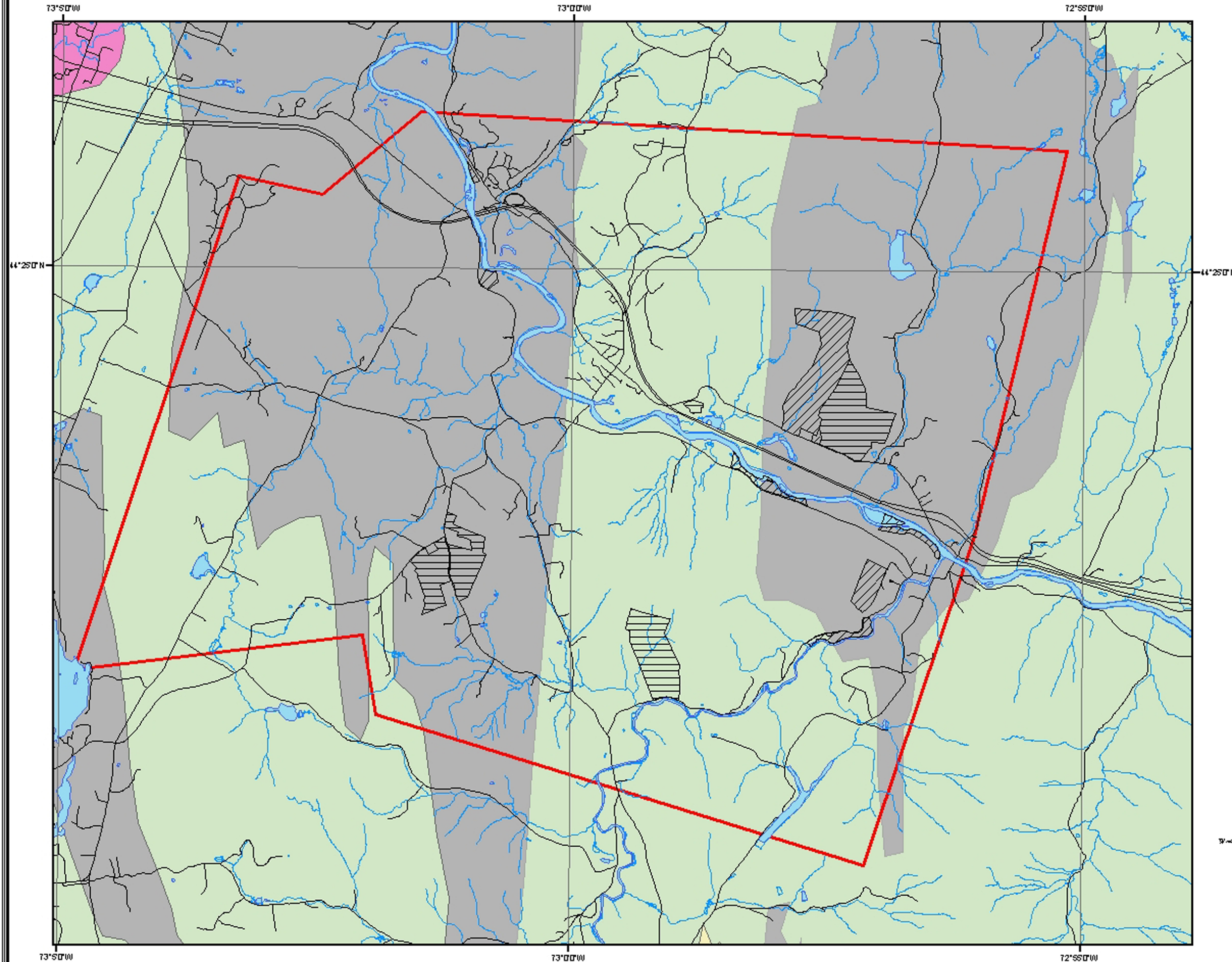


Richmond Bedrock Geology

Richmond Land Trust
Conservation Areas



Legend

- Land Owned by RLTr
- Conserved Land (RLTr)
- Richmond Boundary
- Roads
- Rivers and Streams

Bedrock Geology

1. Limestone, dolomite, marble
2. Calcareous dlastic rocks
3. Slate, graywacke and Conglomerates
4. Pelitic schist, phyllite, gneiss, and granofels
5. Quartzose metasandstone, quartzite
6. Quartzose metasandstone, quartzite: calcareous.
7. Metamorphosed volcanic rocks
8. Ultramafics-- including serpentinites,
9. Felsic igneous volcanic and plutonic rocks

Data Sources: All map layers are from
Vermont Center for Geographic Information
North American Datum 1983
Universal Transverse Mercator Projection



Map created by Jens Hilke 7/04
for the Richmond Land Trust
Scale 1:50,000

