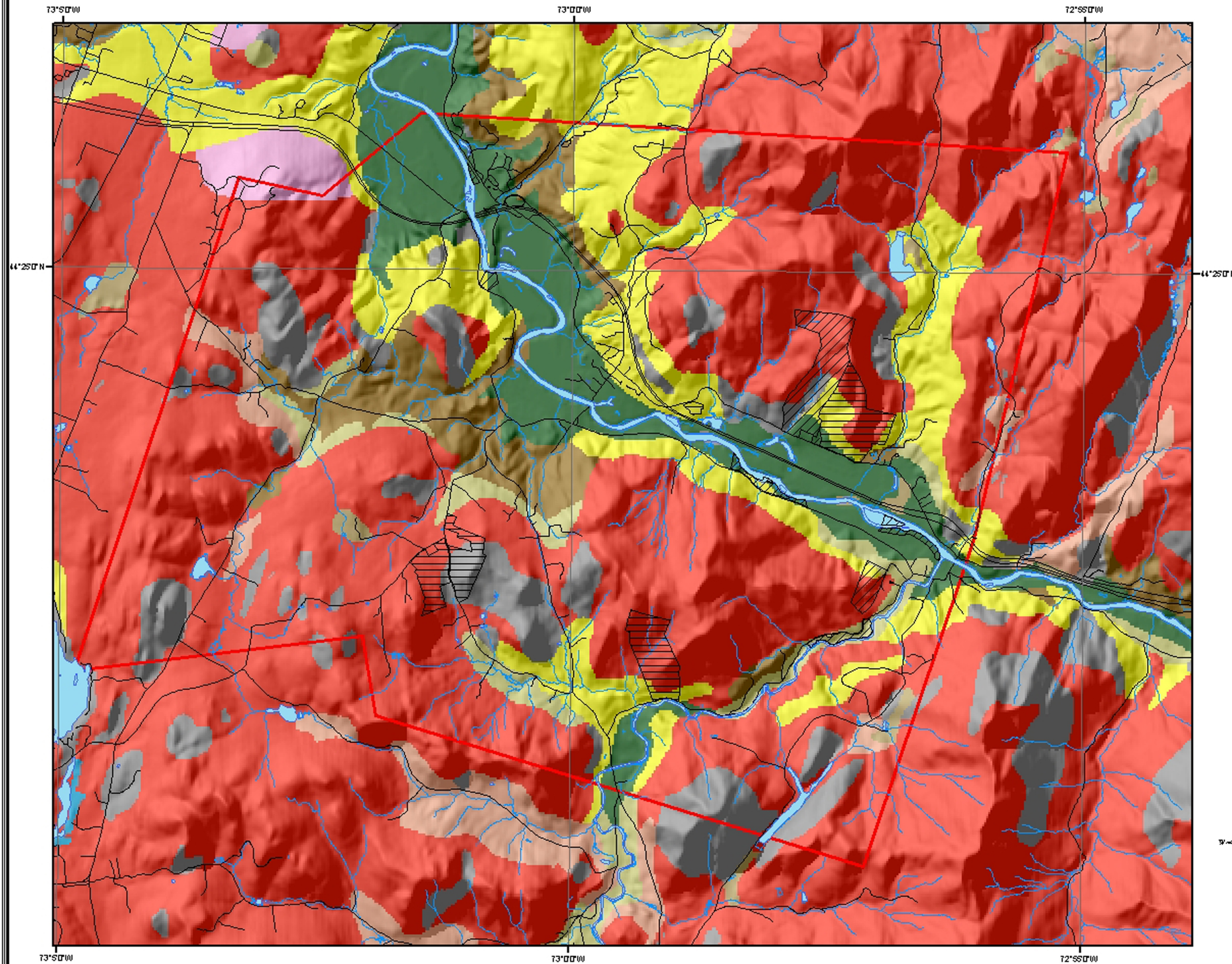


Richmond Surficial Geology

Richmond Land Trust
Conservation Areas



Legend

- Land Owned by RLT
 - Conserved Land (RLT)
 - Richmond Boundary
 - Roads
 - Rivers and Streams
- ### Surficial Geology
- Bedrock
 - Till
 - Wave washed Till
 - Gravels
 - Sands
 - Silts and Clays
 - 7
 - Post Glacial Alluvium
 - Pluvial
 - Water

Data Sources: All map layers are from Vermont Center for Geographic Information
North American Datum 1983
Universal Transverse Mercator Projection



Map created by Jens Hilke 7/04
for the Richmond Land Trust
Scale 1:50,000

