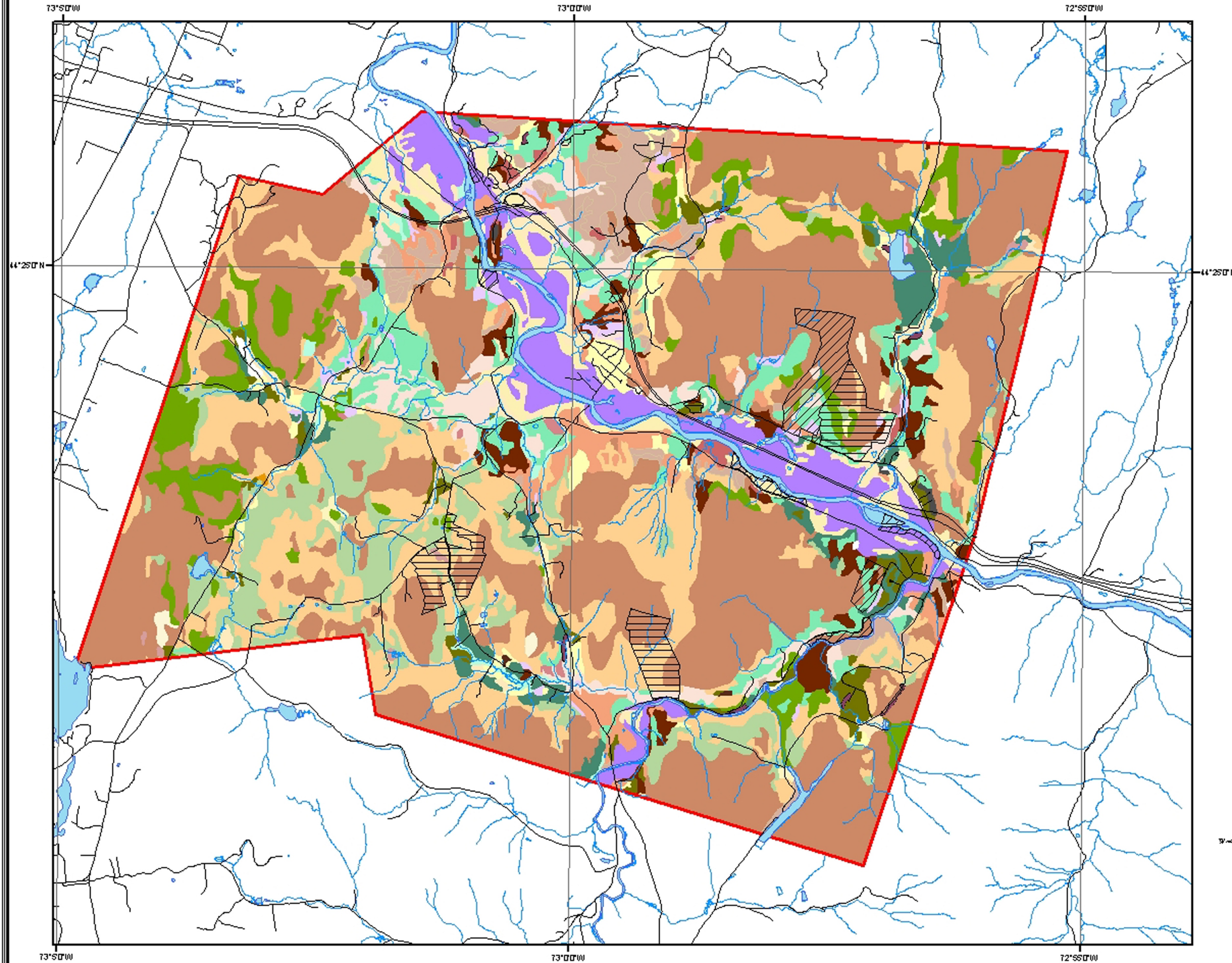


# Richmond Soils

Richmond Land Trust  
Conservation Areas



**Legend**

- Land Owned by RLTL
- Conserved Land by RLTL
- Boundary Boundary
- Road
- Stream

**Soil Type**

- ADAMS AND WINDSOR LOAMY SANDS
- ADAMS FINE SANDY LOAM
- ALLUVIAL LAND
- ALL GRES FINE SANDY LOAM
- BELGRADE AND BELRIDGE SOILS
- BLOW-OUT LAND
- BOBROW PITS
- CABOTSTON SILT LOAM
- COLTON AND STETSON SOILS
- DUANE AND DEERFIELD SOILS
- ENOSBURG AND WHATELY SOILS
- FILL LAND
- HADLEY VERY FINE SANDY LOAM
- HARTLAND VERY FINE SANDY LOAM
- HINCHBURG FINE SANDY LOAM
- LEMERICK SILT LOAM
- LIVINGSTON CLAY
- LYMAN-MARLOW ROCKY LOAMS
- MARLOWSTONKY LOAM
- MUCKAND PEAT
- MURKIN AND BELGRADE SILT LOAMS
- PEACHAMSTONKY SILT LOAM
- PERUSTONKY LOAM
- ROCK LAND
- SCANTON SILT LOAM
- SCARBORO LOAM
- STETSON GRAVELLY FINE SANDY LOAM
- STOCKBRIDGE AND KELLISTONKY LOAMS
- TERRACE ESCARPMENTS, SILTY AND CLAYEY
- WINDOSKI VERY FINE SANDY LOAM

Data Sources: All map layers are from Vermont Center for Geographic Information  
North American Datum 1983  
Universal Transverse Mercator Projection

Map created by Jens Hilke 7/04  
for the Richmond Land Trust  
Scale 1:50,000

0 0.25 0.5 1 1.5 2  
Miles

0 0.375 0.75 1.5 2.25 3  
Kilometers