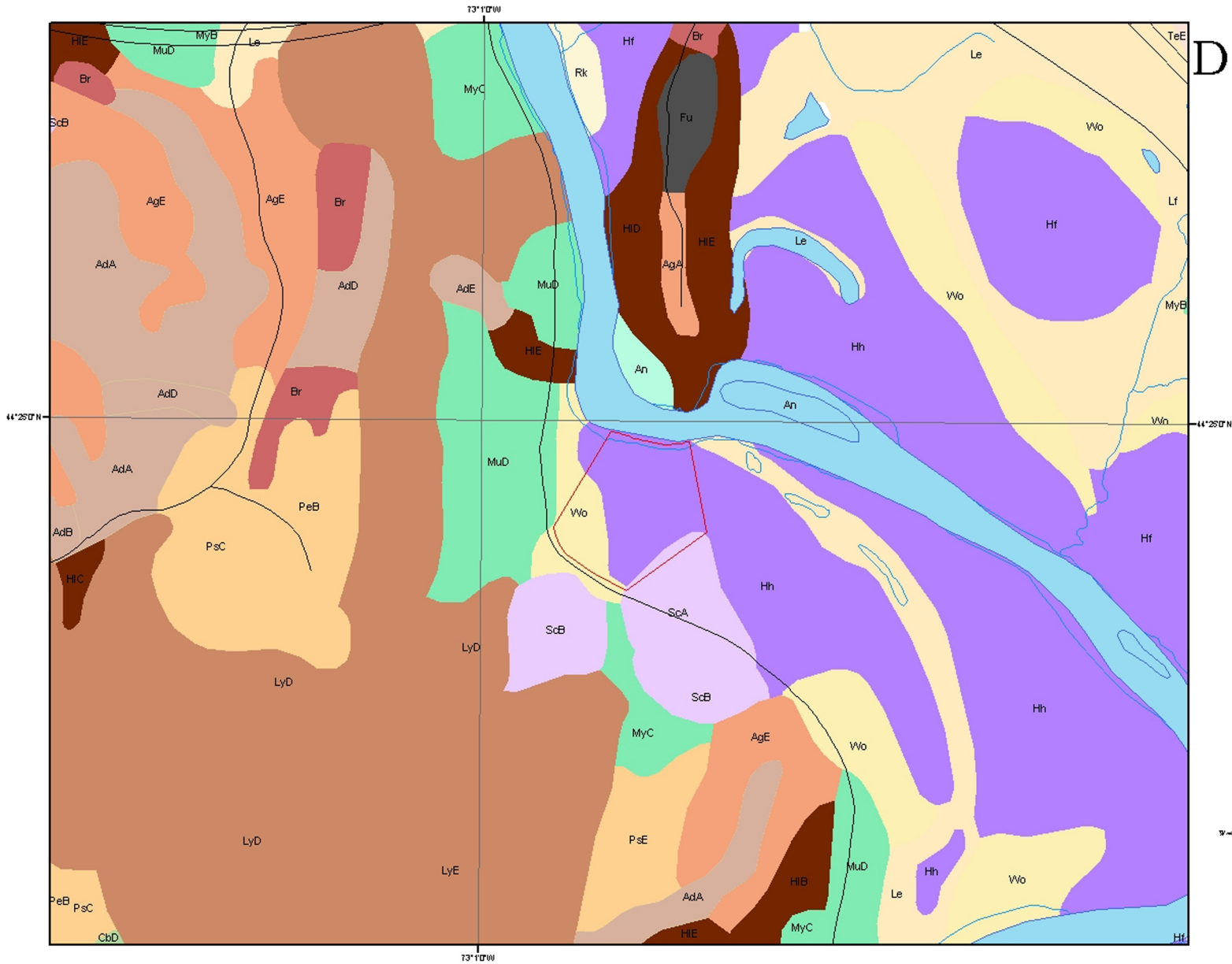


# Rochford Delbianco Parcel Soils

Richmond Land Trust  
Conservation Areas



**Legend**

- Rochford Delbianco Parcel
- Roads
- Rivers and Streams

**Soil Type**

- ADAMS AND WINDSOR LOAMY SANDS (AdA, AdB, AdD, AdE)
- ADAMS FINE SANDY LOAM (AgA, AgD)
- ALLUVIAL LAND (Al)
- AUGER FINE SANDY LOAM (Au)
- BELORADE AND BELORADE SILT LOAMS (BeA, BeB, BeC, BeD)
- BLOOMINGTON LAND (Bl)
- BOBROW PITTS (Bp)
- CABOT STONY SILT LOAM (CaA, CaB, CaC, CaD)
- COLTON AND STETSON SILT LOAMS (CoA, CoB)
- DUNHAM AND DEERFIELD SOILS (DuA, DuB, DuC)
- EMSBURG AND WINTERTON SILT LOAMS (EmA, EmB)
- FILL LAND (Fl)
- HADLEY VERY FINE SANDY LOAM (Hv, HvD)
- HARTLAND VERY FINE SANDY LOAM (Hh, HhC, HhD, HhE)
- HINESBURG FINE SANDY LOAM (HnA, HnB, HnC, HnD)
- LIVERD K SILT LOAM (Lk, LkD)
- LIVINGSTON CLAY (Lv)
- LYMAN-NEAR LOW ROCKY LOAMS (LmB, LmC, LmD, LmE)
- MARLOW STONY LOAM (MaB, MaC, MaD, MaE)
- MUCK AND PEAT (Mp)
- MUNSON AND BELORADE SILT LOAMS (MuD)
- PEACOCK STONY SILT LOAM (Pg)
- PERU STONY LOAM (PeA, PeB, PeC, PeD, PeE, PeF)
- ROCK LAND (Rk)
- SCANTIC SILT LOAM (Sck, SckD)
- SCARBOROUGH LOAM (Sb)
- STETSON OR GRAVELLY FINE SANDY LOAM (StA, StB, StC)
- STOCK BRIDGE AND KILLSBURY LOAMS (SbD)
- TERRACE ESCARPMENTS, SILTY AND CLAYEY (TeD)
- WINDSOR VERY FINE SANDY LOAM (Wv)

Data Sources: All map layers are from Vermont Center for Geographic Information  
North American Datum 1983  
Universal Transverse Mercator Projection

Map created by Jens Hilke 7/04 for the Richmond Land Trust  
Scale 1:6,000

0 0.025 0.05 0.1 0.15 0.2 Miles  
0 0.03 0.06 0.12 0.18 0.24 Kilometers

